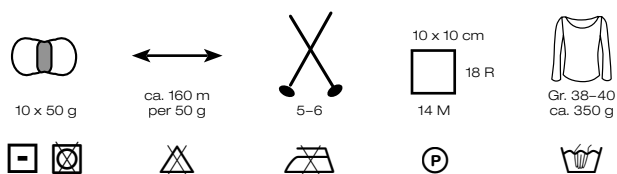




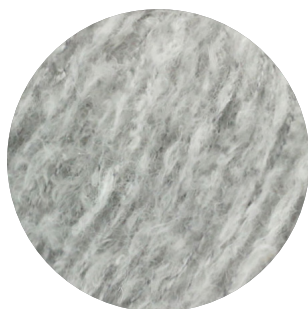
LANA GROSSA

ANIMA Art. 1810

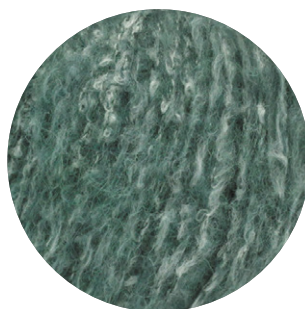
15 % Polyamid, Polyamide
34 % Baumwolle, Cotton
51 % Alpaka, Alpaca



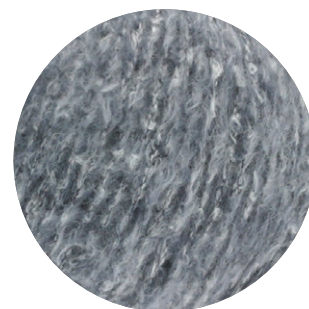
1



2



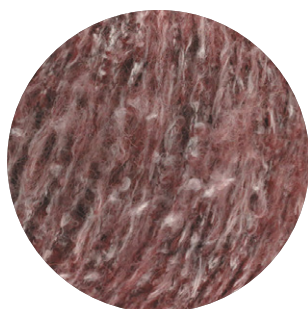
3



4



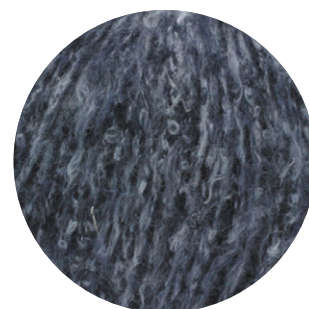
5



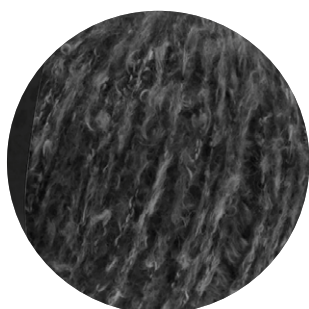
6



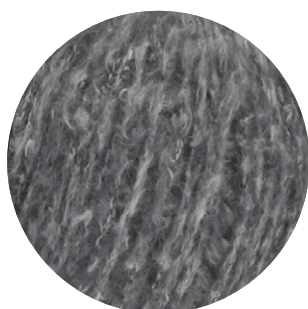
7



8



9



10



11



12

LANA GROSSA GmbH

Ingolstädter Straße 86 · 85080 Gaimersheim · Tel. +49 (0)8458 61-0 · Fax +49 (0)8458 61-36 · www.lanagrossa.de



LANA GROSSA

ANIMA Art. 1810

15 % Polyamid, Polyamide
34 % Baumwolle, Cotton
51 % Alpaka, Alpaca



10 x 50 g



ca. 160 m
per 50 g



5-6

10 x 10 cm



18 R

14 M



Gr. 38-40
ca. 350 g



13



14